

ORDINANCE 2011-2

AN ORDINANCE RELATING TO THE REAPPORTIONMENT OF HOPKINS COUNTY, KENTUCKY, PURSUANT TO KRS 67.075

WHEREAS, pursuant to KRS 67.045 the Hopkins County Fiscal Court at its regular meeting held on May 3, 2011, voted to initiate reapportionment proceedings; and

WHEREAS, pursuant to KRS 67.045 the Hopkins County Fiscal Court has duly published notice of the planned reapportionment in the Madisonville Messenger on May 19, 2011 in accordance with KRS Chapter 424; and

WHEREAS, the Hopkins County Fiscal court appointed on May 31, 2011, three competent citizens of Hopkins County to serve as Reapportionment Commissioners for Hopkins County and these Commissioners were duly sworn in on May 31, 2011; and

WHEREAS, on June 28, 2011 the Reapportionment Commissioners submitted to the County Clerk and members of the Hopkins County Fiscal Court a report recommending seven (7) magisterial districts within Hopkins County, that are compact, contiguous and with a population that is as nearly equal as it is reasonably possible; and

WHEREAS, the Hopkins County Fiscal Court finds that the report of the reapportionment committee is in accordance with all statutory requirements and is acceptable;

NOW, THEREFORE BE IT HEREBY ORDAINED by the Hopkins County Fiscal Court that there shall be seven (7) magisterial districts within Hopkins County, Kentucky, of which the specific districts and boundaries for same are set forth within the attached Exhibit A which is incorporated fully and completely and made a part of this Ordinance.

Magisterial District One (1)	Population of 6753
Magisterial District Two (2)	Population of 6494
Magisterial District Three (3)	Population of 6979
Magisterial District Four (4)	Population of 6901
Magisterial District Five (5)	Population of 6988
Magisterial District Six (6)	Population of 6421
Magisterial District Seven (7)	Population of 6384

This Ordinance amends and supersedes any previous Ordinance or Order of the Hopkins County Fiscal Court establishing the previous seven (7) magisterial districts with Hopkins County, Kentucky.

If any provision of this Ordinance is deemed by a Court of competent jurisdiction

to be unenforceable or unconstitutional, the remaining provisions of this Ordinance shall continue in full force and effect.

This Ordinance shall take effect and be in full force immediately upon adoption and all Ordinances or parts of other ordinances in conflict with this ordinance are hereby released so as allowable by applicable law.

Upon motion of Magistrate Maurice Wilson and seconded by Magistrate Beshears, the Ordinance as first read on the 12th day of July, 2011 was approved. Whereupon the vote was called and on roll call, the Ordinance was adopted.


Magistrate Welch - Absent
Magistrate Groves - Yes
Magistrate Toney - Yes
Magistrate Larry Wilson - Yes
Magistrate Roberts - Yes
Magistrate Beshears - Yes
Magistrate Maurice Wilson - Yes

On second reading of the foregoing ordinance on August 2, 2011, on motion by Magistrate Beshears and second by Magistrate Beshears that this Ordinance be duly adopted.

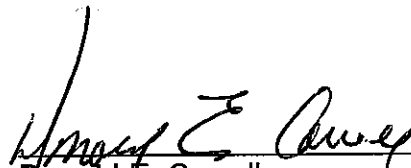
Magistrate Welch - Yes
Magistrate Groves - Yes
Magistrate Toney - Yes
Magistrate Larry Wilson - Yes
Magistrate Roberts - Yes
Magistrate Beshears - Yes
Magistrate Maurice Wilson - Yes

WHEREUPON, County Judge/Executive Donald E. Carroll declared the Ordinance adopted and on its second read, affixed his signature and the date thereto and declared that the same be recorded.

This the 2nd day of August, 2011



Devra Steckler
Hopkins County Clerk

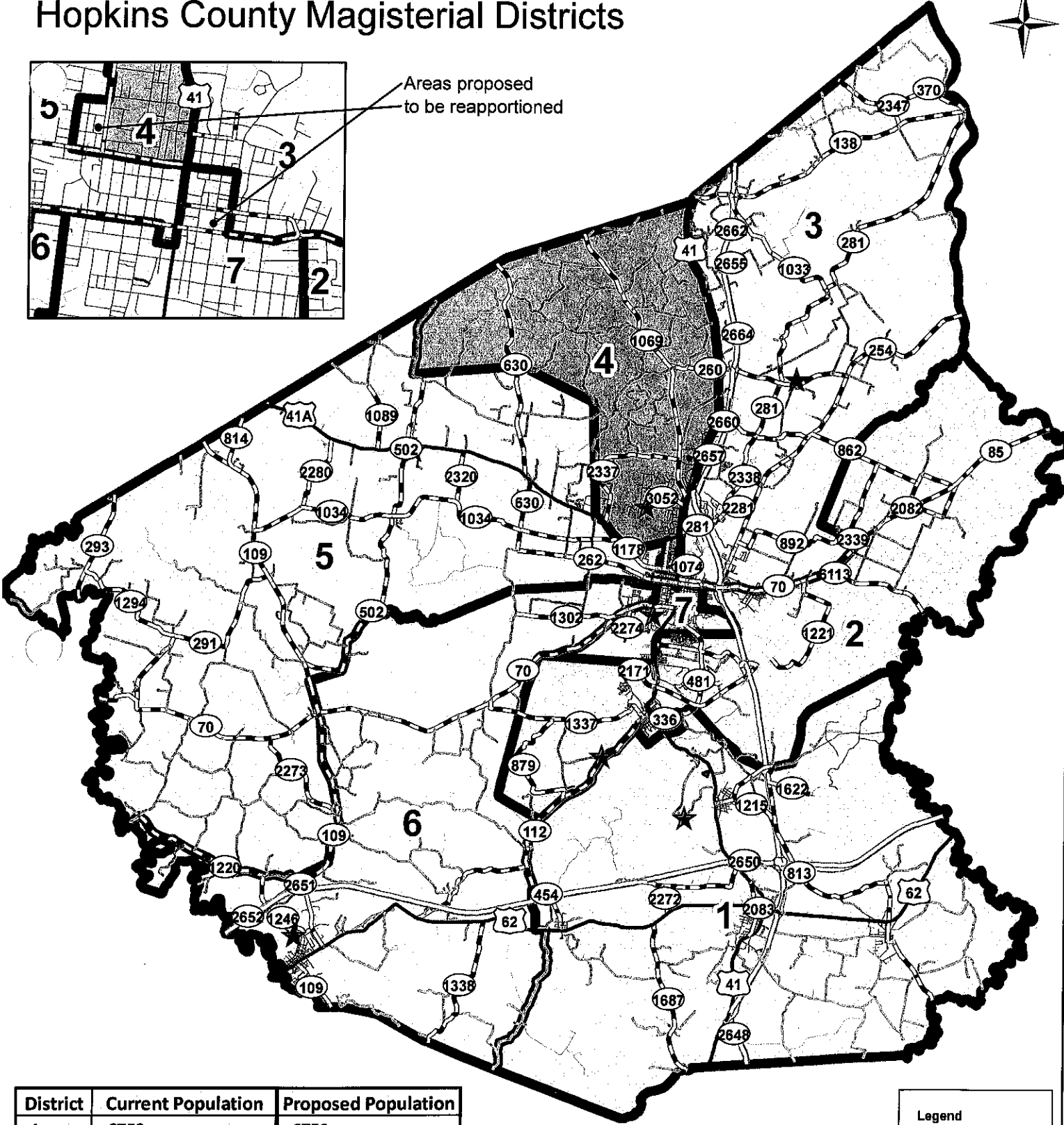


Donald E. Carroll
Hopkins County Judge/Executive

Hopkins County Magisterial Districts



Areas proposed to be reapportioned



District	Current Population	Proposed Population
1	6753	6753
2	5913 (Under 455)	6494
3	6979	6979
4	7108 (Over 70)	6901
5	6781	6988
6	6421	6421
7	6965	6384

Legend

- ★ Magistrate Residence
- ▭ Current Districts
- ▭ 1-Weich
- ▭ 2-Groves
- ▭ 3-Toney
- ▭ 4-L. Wilson
- ▭ 5-Roberts
- ▭ 6-Beshears
- ▭ 7-M. Wilson

Committee Proposal: June 21, 2011